

STRAIGHT LOAD DIVIDERS

2025

Customise your dividers by selecting your preferences below!

1. HEAD DIVIDERS

- a) No head divider (included in standard)
- b) Mesh head divider
- c) Bar head divider
- d) Stallion head divider. This head divider is fixed and sits half way back onto the centre divider. Add this option as well as head divider in front of divider.

2. DROP RUBBER

- a) No drop rubber (included in standard)
- b) Ventilated drop rubber to centre divider

3. PADDING

- a) No padding (included in standard)
- b) Padding to centre divider
- c) Padding to chest bars
- d) Padding to rump bar
- e) Upgraded padding to breaching gates

4. CHEST BARS

- a) Not adjustable (included in standard)
- b) Adjustable bay length
- c) Adjustable chest bar height

5. OTHER OPTIONAL EXTRAS

- a) Add a one piece rump bar (suitable for transporting only one horse)
- b) Remove rear dog leg
- c) Customise your dividers! Contact the staff at Tuza to discuss.



Tuza Straight Load floats come with standard dividers (pictured above). These steel dividers are fully removable.

POPULAR STRAIGHT LOAD DIVIDER UPGRADES



MESH HEAD DIVIDER



BAR HEAD DIVIDER

POPULAR STRAIGHT LOAD DIVIDER UPGRADES



PADDED CHEST BARS, RUMP BARS AND CENTRE DIVIDER



ADJUSTABLE CHEST BAR



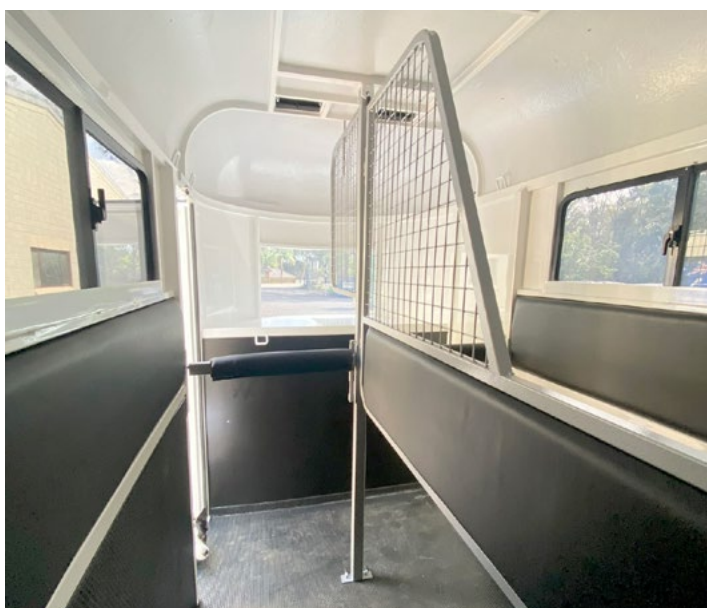
ONE PIECE RUMP BAR



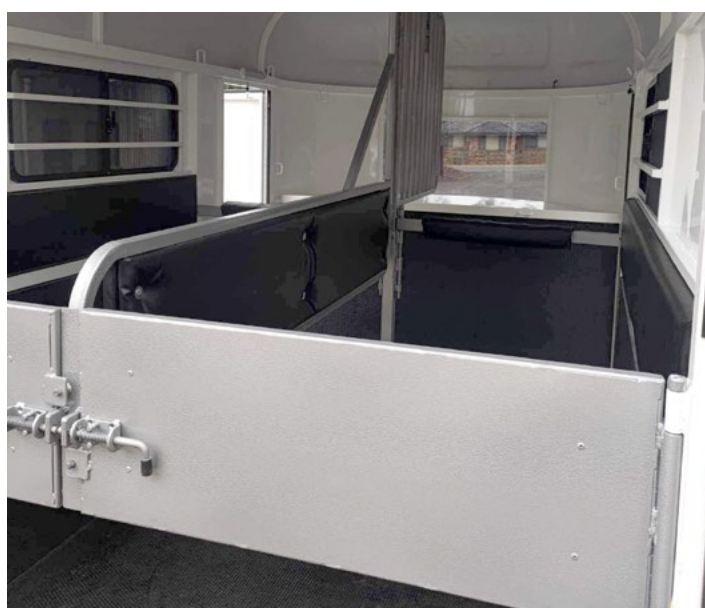
PADDED DIVIDERS AND BREACHING GATES



NO REAR DOG LEG



MESH HEAD DIVIDER, STALLION DIVIDER AND PADDED DIVIDERS



BREACHING GATES, PADDED DIVIDERS AND BAR HEAD DIVIDER