

GOOSENECKS

2025



Tuza Goosenecks are designed and engineered for strength and durability. The Unique Tuza Flexi Cush Rubber Suspension gives you the peace of mind that your horse is travelling comfortably. Eliminating the fatigue factor in transportation and ensuring they will come off the float ready to perform. *Champions prefer TUZA!*

2 HORSE ANGLE LOAD GOOSENECK

\$47,000

Internal Length: 18'/5487mm
 Internal Width: 6'3"/1910mm
 Internal Height: 7'3"/2210mm
 Overall Length: 18'/5487mm
 Overall Width: 8'1"/2480mm
 Overall Height: 9'/2740mm
 Tare Weight: TBC*
 ATM/GVM: 4500kg
 Bay Size: 680mm x 2450mm**

3 HORSE ANGLE LOAD GOOSENECK

\$53,800

Internal Length: 21'/6401mm
 Internal Width: 6'3"/1910mm
 Internal Height: 7'3"/2210mm
 Overall Length: 21'/6401mm
 Overall Width: 8'1"/2480mm
 Overall Height: 9'/2740mm
 Tare Weight: TBC*
 ATM/GVM: 4500kg
 Bay Size: 680mm x 2450mm**

*TARE WEIGHT IS DETERMINED BY FINAL SPECIFICATIONS, ADD ON PACKS & ACCESSORIES; **APPROXIMATE BAY SIZE.

5 YEAR FACTORY BACKED WARRANTY on Flexi Cush torsion rubber suspension.

2 YEAR FACTORY BACKED WARRANTY on parts and workmanship.



**4 HORSE ANGLE LOAD
GOOSENECK
\$57,000**

Internal Length: 24'/7316mm

Internal Width: 6'3"/1910mm

Internal Height: 7'3"/2210mm

Overall Length: 24'/7316mm

Overall Width: 8'1"/2480mm

Overall Height: 9'/2740mm

Tare Weight: TBC*

ATM/GVM: 4500kg

Bay Size: 680mm x 2450mm**

**5 HORSE ANGLE LOAD
GOOSENECK
\$63,000**

Internal Length: 27'/8230mm

Internal Width: 6'3"/1910mm

Internal Height: 7'3"/2210mm

Overall Length: 27'/8230mm

Overall Width: 8'1"/2480mm

Overall Height: 9'/2740mm

Tare Weight: TBC*

ATM/GVM: 4500kg

Bay Size: 680mm x 2450mm**

CHASSIS AND FRAMEWORK TUZA GOOSENECKS

- Tuza Unique Flexi Cush Rubber Torsion Bar suspension
- Australian certified steel used on all floats
- Dura glide chassis (unique engineered ladder frame chassis)
- All structure of chassis, frame/skeleton and sheet work is fully welded for strength and durability (no pop rivets)
- Dura Gal Framework - (frame/skeleton)
- Sheet work: zinc anneal sheeting, pressed for extra strength
- Swivel away jockey wheel
- 10 tonne coupling and 4 tonne jack
- 4 wheel brakes with brake away unit
- 4 new truck tyres fitted with white rims
- 1 new spare truck tyre fitted to outside of float

*TARE WEIGHT IS DETERMINED BY FINAL SPECIFICATIONS, ADD ON PACKS & ACCESSORIES; **APPROXIMATE BAY SIZE.

TUZA
AUSTRALIAN MADE & OWNED SINCE 1964

☎ 1300 008 892
✉ sales@tuza.com.au
🌐 www.tuza.com.au

📍 80-90 Vincent Ave
Mulgoa NSW 2745
💰 Need finance? We can help.



INTERNAL TUZA GOOSENECKS

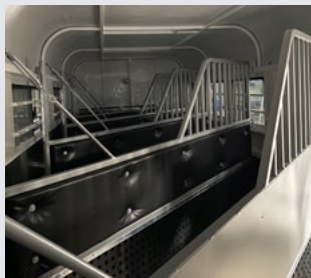
- Australian engineered F27 hardwood flooring
- Industrial equine rubber matting internally and to tailgate
- 7' stage (bed/storage area)
- Full height and lockable personal access door
- Fully welded and removable dividers
- Tuza telescopic and adjustable bays, allowing you to adjust to suit your horses
- Head dividers on centre dividers
- Padding to rump side of wall above kickboard
- 1000mm (H) timber kickboards
- Internal tie ups (2 in each bay)
- 12V internal light (works from the accessories of car)



EXTERNAL TUZA GOOSENECKS

- Fully enclosed with open sides and open above tailgate
- 600mm (H) stone guard checker plate protection to front
- Stone guard checker plate protection to front of mudguards
- Pinch weld to checker plate edging
- Colourbond tailgate
- External tie ups (2 on each side of float)
- Side gussets to float
- Large UV and tinted front window
- Easy lift gas strut tailgate with spring latches
- LED tail lights, clearance lights & number plate lamp
- 4 wheel electric brakes
- Brake away system
- Undercoated with premium vinyl etch (anti-rusting agent)
- Painted with premium industrial PPG '2 Pac' paint
- Choice of vinyl striping from our Tuza designs

OPTIONAL DIVIDER UPGRADES



ADD ON PACKS & ACCESSORIES TUZA GOOSENECKS



Choose one of our add on packs or add individual accessories to customise your new Tuza Float to suit your needs. Contact us for our accessories list!



LOCK UP PACK

Starting from \$2,950

- 2 sliding windows with screens and locks
- Lockable gas lift door or split barn doors to rear

STORE MORE PACK

Starting from \$2,520

- Swing out rear tack box or 3/5 front tack box
- Storage fitted with 2 removable saddle racks and bridle hooks
- Enclosed rug rack to rump side

WARMBLOOD PACK

Starting from \$2,325

- Extended internal height to 7'6"/2286mm
- Extended internal length to suit large horses
- Bays are approximately 700-750mm x 2650mm to accommodate 16 hand +*

RACING PACK

Starting from \$3,814

- Extended internal height to 7'6"/2286mm
- Extended internal length to suit large horses
- Bays are approximately 700-750mm x 2650mm to accommodate 16 hand +*
- Drop sheet rubber protector to centre divider
- Rubber lining to rump side timber kickboard

*CONTACT US TO DISCUSS LENGTH OPTIONS & MAXIMUM LENGTH OF RACING AND WARMBLOOD PACKS.

TUZA
AUSTRALIAN MADE & OWNED SINCE 1964

☎ 1300 008 892
✉ sales@tuza.com.au
🌐 www.tuza.com.au

📍 80-90 Vincent Ave
Mulgoa NSW 2745
💰 Need finance? We can help.

ACCESSORIES TUZA GOOSENECKS



1,2,3: SEPARATE LIVING AREAS; 4: SHOWER IN LIVING AREA; 5: COWBOY SHOWER WITH RAISED RUBBER EDGE ON FLOOR; 6: CARAVAN DOOR; 7: COOKTOP; 8: SINK; 9: MATTRESS; 10: COOKER AND SINK.

TUZA
AUSTRALIAN MADE & OWNED SINCE 1964

☎ 1300 008 892
✉ sales@tuza.com.au
🌐 www.tuza.com.au

📍 80-90 Vincent Ave
Mulgoa NSW 2745
💰 Need finance? We can help.