

**TUZA**  
AUSTRALIAN MADE & OWNED SINCE 1964

# RACING ANGLE LOADS

2025



Tuza Racing Angle load has been designed to suit the Race Horse Industry. This design comes standard with larger bays, extra head room, Rubber drop down protectors on centre dividers and Rubber lined kickboards to rump side. With these standard features and the Unique Tuza Flexi Cush Rubber suspension; this design will give your Race horses a comfortable ride to the race track. Eliminating the fatigue factor in transportation and ensuring they will come off the float ready to perform. *Champions prefer TUZA!*

## **R 2 HORSE ANGLE LOAD** **\$25,914**

Internal Length: 12'6"/3810mm  
Internal Width: 6'3"/1910mm  
Internal Height: 7'6"/2286mm  
Overall Length: 16'11"/5160mm  
Overall Width: 8'1"/2480mm  
Overall Height: 9'4"/2850mm\*  
Tare Weight: 1200kg\*\*  
ATM/GVM: 3000kg\*\*\*  
Bay Size: 700-750 x 2650mm\*\*\*\*

## **R 3 HORSE ANGLE LOAD** **\$29,218**

Internal Length: 17'/5182mm  
Internal Width: 6'3"/1910mm  
Internal Height: 7'6"/2286mm  
Overall Length: 21'5"/6532mm  
Overall Width: 8'1"/2480mm  
Overall Height: 9'4"/2850mm\*  
Tare Weight: 1500kg\*\*  
ATM/GVM: 3500kg\*\*\*  
Bay Size: 700-750 x 2650mm\*\*\*\*

## **R 4 HORSE ANGLE LOAD** **\$32,522**

Internal Length: 18'/5486mm  
Internal Width: 6'3"/1910mm  
Internal Height: 7'6"/2286mm  
Overall Length: 22'5"/6836mm  
Overall Width: 8'1"/2480mm  
Overall Height: 9'4"/2850mm\*  
Tare Weight: 1550kg\*\*  
ATM/GVM: 3500kg\*\*\*  
Bay Size: 700-750 x 2650mm\*\*\*\*

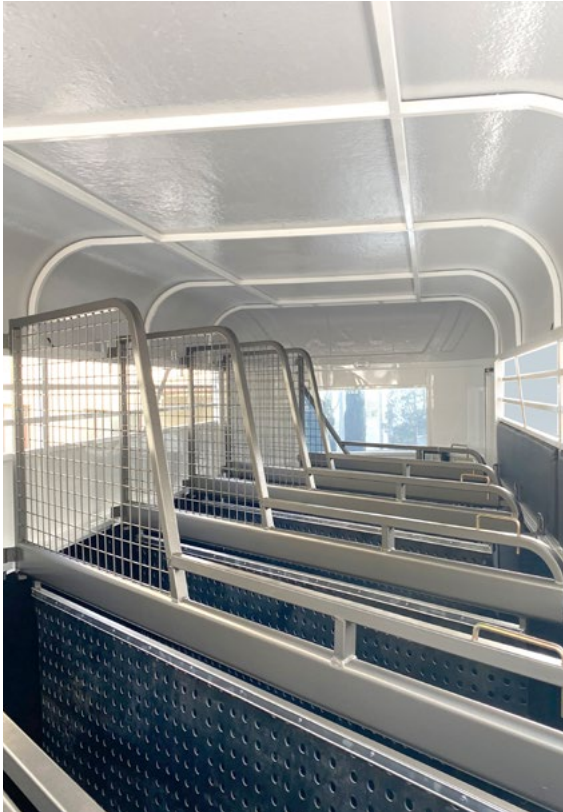
\*OVERALL HEIGHT IS DETERMINED BY WHEELS USED; \*\*TARE WEIGHT IS DETERMINED BY FINAL SPECIFICATIONS & THE INCLUSION OF ADD ON PACKS AND ACCESSORIES; \*\*\*OPTION TO UPGRADE ATM/GVM; \*\*\*\*APPROXIMATE BAY SIZE.

**TUZA**  
AUSTRALIAN MADE & OWNED SINCE 1964

☎ 1300 008 892  
✉ [sales@tuza.com.au](mailto:sales@tuza.com.au)  
🌐 [www.tuza.com.au](http://www.tuza.com.au)

📍 80-90 Vincent Ave  
Mulgoa NSW 2745  
💰 Need finance? We can help.





## INTERNAL TUZA RACING

- Australian engineered F27 hardwood flooring
- Industrial equine rubber matting internally and to tailgate
- Full height and lockable personal access door
- Fully welded and removable dividers
- Extra large bays and extra head room for larger horses
- Tuza telescopic and adjustable bays, allowing you to adjust to suit your horses
- Head dividers on centre dividers
- Rubber ventilated protectors on centre dividers
- 1000mm (H) timber kickboards
- Rubber lining to rump side of kickboards
- Internal tie ups (2 in each bay)
- 12V internal light (works from the accessories of car)

## EXTERNAL TUZA RACING

- Fully enclosed with open sides
- Extended height at 7'6" – giving extra head room
- Extended length to give horses extra big bays
- 600mm (H) stone guard checker plate protection to front
- Stone guard checker plate protection to front of mudguards
- Covered in A frame (stone guard checker plate)
- Pinch weld to checker plate edging
- Colourbond tailgate
- External tie ups (2 on each side of float)
- Side gussets to float
- Large UV and tinted front window
- Easy lift gas strut tailgate with spring latches
- LED tail lights, clearance lights & number plate lamp
- Undercoated with premium vinyl etch (anti-rusting agent)
- Painted with premium industrial PPG '2 Pac' paint
- Choice of vinyl striping from our Tuza designs





# FACTORY BACKED WARRANTY TUZA RACING

**5 YEAR FACTORY BACKED WARRANTY** on Flexi Cush torsion rubber suspension.

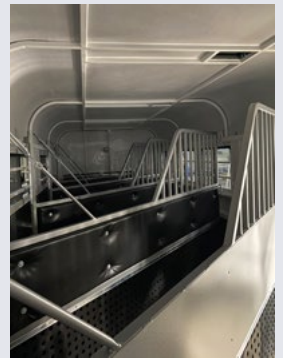
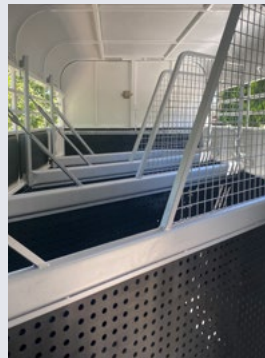
**2 YEAR FACTORY BACKED WARRANTY** on parts and workmanship.



## CHASSIS AND FRAMEWORK TUZA RACING

- Tuza Unique Flexi Cush Rubber Torsion Bar suspension
- Australian certified steel used on all floats
- Dura glide chassis (unique engineered ladder frame chassis)
- All structure of chassis, frame/skeleton and sheet work is fully welded for strength and durability (no pop rivets)
- Dura Gal Framework – (frame/skeleton)
- Sheet work: zinc anneal sheeting, pressed for extra strength
- Swivel away jockey wheel
- 2 safety chains (stamped and certified)
- 4 wheel brakes with brake away unit
- 4 new truck tyres fitted with white rims
- 1 new spare truck tyre fitted to outside of float

## OPTIONAL DIVIDER UPGRADES





# ADD ON PACKS TUZA RACING



## STORE MORE PACK

Starting from \$2,520

- Swing out rear tack box or 3/5 front tack box
- Storage fitted with 2 removable saddle racks and bridle hooks
- Enclosed rug rack to rump side



## LOCK UP PACK

Starting from \$2,950

- 2 sliding windows with screens and locks
- Lockable gas lift door or split barn doors to rear



## ACCESSORIES

Contact us for our accessories list

Choose one of our add on packs or add individual accessories to customise your new Tuza Float to suit your needs.